

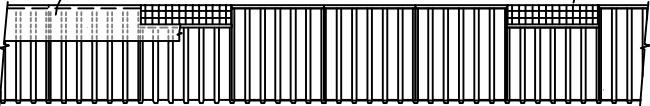
**LAG SCREW FASTENING REQUIREMENTS**

2 LAG SCREWS PER FOOT OF PANEL (EXCEPT AT VENTS), TYPICAL.

CONDITIONS REQUIRING 3 LAGS PER FOOT OF ATTACHED PANEL ARE AS FOLLOWS:

- WIND ZONE I:**  
 TRANSVERSE WALLS OF SINGLE-WIDE UNITS < 14' WIDE WITH A 3' MAX OPENING.
- WIND ZONE II**  
 TRANSVERSE WALLS OF MULTI-WIDE UNITS.

WOOD RIM W/O SPACER SHOWN HERE.  
 DO NOT PLACE VENTS AT LOCATIONS OF REQUIRED SUPPORT.  
 OPTIONAL CLADDING OVER PANELS

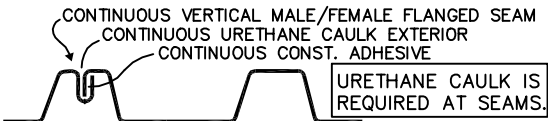


**DROPPED PANELS FOR VENTILATION:**

ANY 1 IN 4 CONTIGUOUS PANELS MAY HAVE THE TOP LOCATION LOWERED TO CREATE VENTILATION OPENINGS, TYPICAL OF ALL INSTALLATIONS EXCEPT AT THE END WALLS OF SINGLE-WIDE UNITS (WHICH CAN HAVE 1 VENT OPENING MAX. TYPICAL WALLS MUST HAVE MIN 2 PANELS BETWEEN ANY 2 OPENINGS. OPENINGS SHALL BE SCREENED WITH 1/4" MESH. A CRAWL-SPACE ACCESS OPENING CAN SUBSTITUTE FOR ANY VENT OPENING.

COAT OVER THE GALVANIZED PANELS PRIOR TO BACKFILL. LEAVE NO VOIDS IN THE COAT.

BACKFILL CAN BE PLACED UP TO 3' HIGH TYP. GRADES MUST SLOPE 2% MIN OVER 5' AWAY MIN. OK TO FILL UP TO ANY CLADDING THAT IS OK FOR SOIL CONTACT. KEEP SOIL 6" MIN CLEAR OF BLDG.

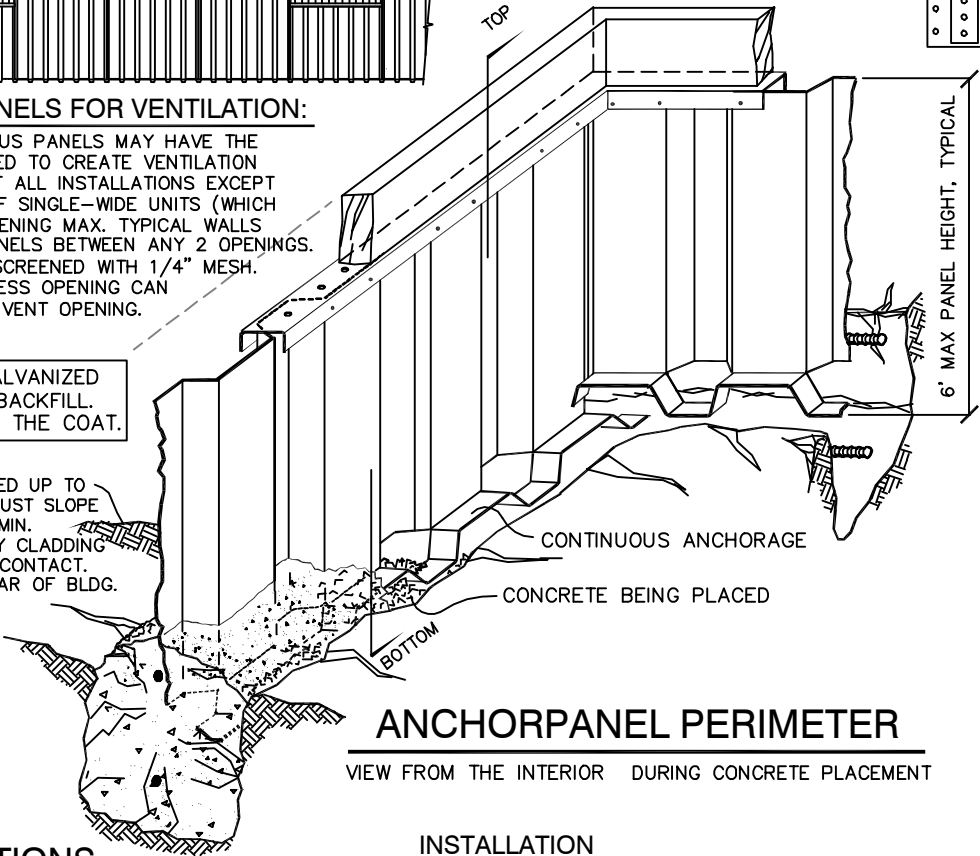
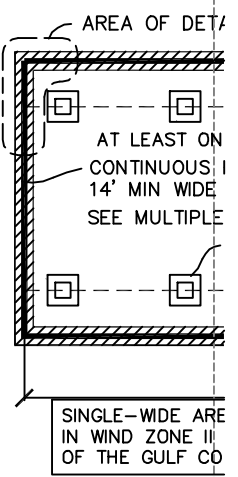
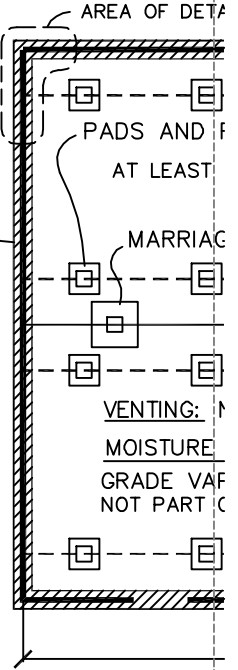


**PLAN/SECTION DETAIL @ SEAM**

SEAMS AT 3' O/C ABOUT THE PERIMETER TYPICAL

CONTINUOUS PANELS AROUND ENTIRE HOME WITH VENT-PANELS AND ACCESS OPENINGS INSTALLED AT A MAXIMUM OF 1 IN 4 PANELS ON AVERAGE FOR LONGITUDINAL WALLS. TRANSVERSE WALLS OF MULTI-UNIT HOMES CAN HAVE ONE OPENING PER UNIT IN ALL WIND ZONES, AND 3 OPENINGS PER TWO UNITS IN WIND ZONE II. SEE LAG FASTENING REQUIREMENTS FOR TRANSVERSE WALLS.

FOR HOMES THAT REQUIRE STRAP TIE-DOWNS AT EXT. SHEAR WALLS, THE STRAPS CAN FASTEN DIRECTLY TO THE ANCHORPANEL WITH 7- #10 SDST SHEET-METAL SCREWS - IN A SINGLE LINE SPACED 5/8" APART MIN. WHERE THE STRAP DOES NOT ALIGN WITH A PANEL RIB, A 16 GA PLATE WITH MIN 5-#10 SCREWS EACH SIDE CAN BE USED. ALTERNATIVELY, THE STRAP CAN ANCHOR INTO THE CONCRETE FOOTING. CONTACT FAST TRACK FOR MORE INFO.



**ANCHORPANEL PERIMETER**

VIEW FROM THE INTERIOR DURING CONCRETE PLACEMENT

CONTINUOUS #4 MIN REBAR AT PANELS, 24" MIN LAPS.

FOOTING: MIN 12" WIDE BY 12" BELOW EXT. FINISH GRADE

ANCHORAGE FLANGE PER PANEL MANUFACTURE - MUST BE FIELD-BENT WITH A TOOL PROVIDED BY FAST TRACK CONTINUOUS #4 MIN LOWER-REBAR, 24" MIN LAPS.

TRENCH DEPTH ACCORDING TO LOCAL FROST REQ'MTS, IF AN

**SPECIFICATIONS**

**MATERIALS**

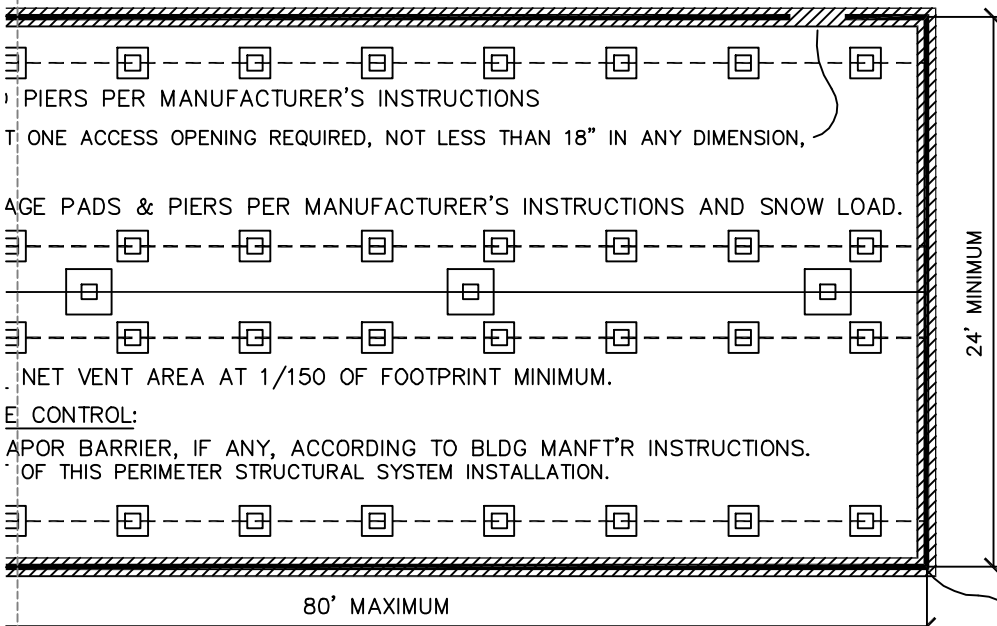
- ALL PANEL STEEL MATERIAL TO MEET ASTM A-653 18 GAGE (0.043") MIN, GRADE 40 MIN, G-90 GALV MIN.
- TOP DETAIL SCREWS TO BE HD GALV OR ZINC PLT.
- PANEL DEFORMATIONS AT BOTTOM TO MEET DETAILS.
- IN-SITU CONCRETE 28 DAY STRENGTH TO BE 2500psi.
- REINFORCING BARS PER ASTM A-615 GRADE 40 MIN.

**INSTALLATION**

- FOUNDATION WALL PANELS TO BE ATTACHED PER TOP & SEAM DETAIL BEFORE CONCRETE PLACEMENT.
- TOP FOOTING REBAR SHALL BE USED TO TRUE PANELS.
- AS CONCRETE IS PLACED IN FOOTING TRENCH, PANELS SHALL BE CHECKED FOR PLUMB (+/- 2%) BEFORE CONCRETE HAS SET. EXTERIOR CONCRETE SHALL GENERALLY SLOPE AWAY FROM PANELS.
- PANEL EDGES SHALL NOT BE LEFT EXPOSED TO THE WEATHER OR LEFT IN CONTACT WITH BACKFILL.

- ENTIRE PANEL EXTERIOR SURFACE A THOROUGH COATING OF AN EPIC BASED BARRIER COMPOUND ("TAR") ANY BACKFILLING OPERATION OR INTERIOR SURFACES NEED TAR IT WILL COME IN CONTACT WITH SO A CEMENT-COAT OF 3/32" MIN PC SUBSTITUTE FOR "TAR", PROVIDED IS ASSURED BY PREPARATION AND ALTERNATIVELY, PANELS MAY HAVE EPOXY OR POLYMER COATING IN DAMAGED AREAS MUST BE RECC

TAIL VIEW



**MULTIPLE-WIDE PLAN** N.T.S.

PANELS FOLD AROUND CORNERS (W/50% SAW KERFING) OR PANEL EDGES ARE CAULKED TOGETHER AT CORNERS.

**DESIGN LOADS**

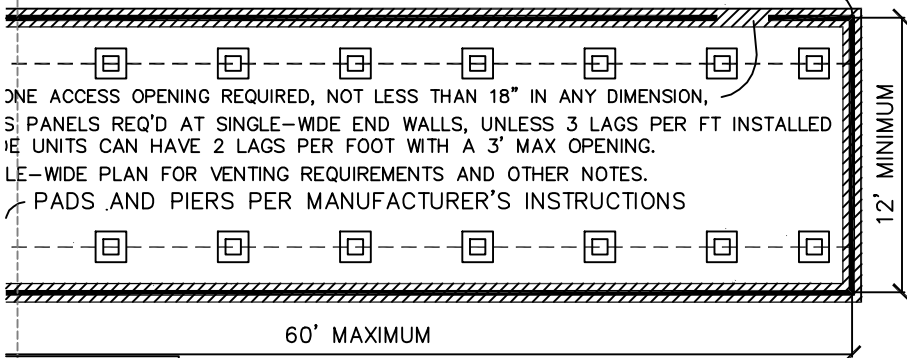
- ROOF LIVE LOAD: 30 psf
- MAX SNOW LOAD: 80 psf
- FLOOR LIVE LOAD: 50 psf
- M.H. UNIT WEIGHT: 50 psf max, 22 psf min.
- WIND LOAD: ZONES I & II
- ROOF SLOPE: 4 IN 12 MAX (OR CONTACT US)
- SINGLE-WIDE ARE NOT ALLOWED IN ZONE II.

DESIGN LOADS CAN MODIFY ONLY WITH PROJECT-SPECIFIC ENGINEERING

**INSTALLATION / SITE REQUIREMENTS**

- PROPERLY INSTALLED ANCHORPANEL WILL PROVIDE LOAD-SPREADING GRADE-BEAM PROPERTIES SUPERIOR TO ANY INTERIOR PIER OR TIE-DOWN FOUNDATION SYSTEM.
1. SOIL CONDITIONS SHOULD BE SUITABLE FOR CONVENTIONAL CONSTRUCTION, WITH A MINIMUM BEARING STRENGTH OF 1000psf. CLAYS WHICH ARE TOO EXPANSIVE FOR CONVENTIONAL FOUNDATION CONSTRUCTION SHALL NOT BE BUILT UPON WITHOUT A GEOTECHNICAL APPROVAL BY OTHERS.
  2. THIS SYSTEM IS SUITABLE FOR SLOPING SITES, PROVIDING MAXIMUM PANEL HEIGHT IS THAT SHOWN, AND FOOTING TRENCHES AT SLOPES > 10% ARE LEVEL-STEPPED. TALLER PANELS CAN BE UTILIZED ONLY WITH PROJECT-SPECIFIC CALCULATIONS BY A TEXAS LICENSED ENGINEER.
  3. FINISH GRADES SHALL SLOPE 2% OVER 5' MIN TO DRAIN SURFACE WATER AWAY FROM FDN. EXCEPTIONS CAN BE UTILIZED WITH PROJECT-SPECIFIC PROFESSIONAL CIVIL ENGINEERING.
  4. INSTALLATION IN FLOOD HAZARD AREAS SHALL BE PER FEMA GUIDELINES.
  5. LOW PROFILE SETS SHALL BE MADE IN CONSIDERATION OF SITE MOISTURE, AND ONLY WHERE SUCH CONDITIONS ALLOW A SUITABLY DRY CRAWL-SPACE. FOLLOW TX STATE DRAINAGE DESIGN WHERE REQUIRED.

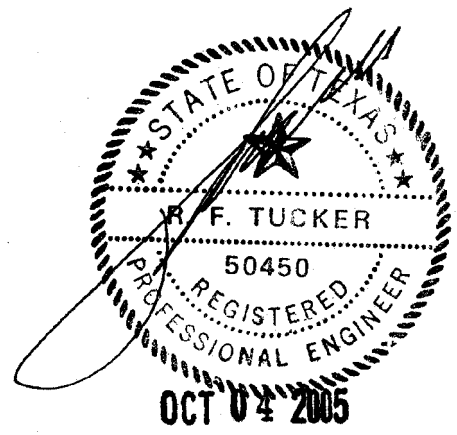
TAIL VIEW



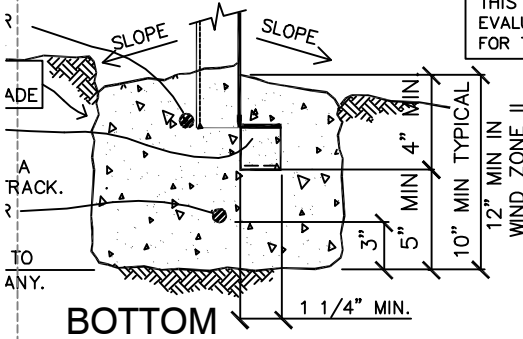
**SINGLE-WIDE PLAN** N.T.S.

ARE NOT ALLOWED IN ZONE II (WITHIN 1500' COAST)

INSTALLATION INSTRUCTIONS FOR THE TEXAS STATE APPROVED STABILIZING SYSTEM, REFERENCE FAST TRACK FOUNDATION SYSTEMS' ANCHORPANEL CERTIFICATION REPORT #FTFS-TX-070605-1 AS APPROVED BY TDHCA ON OCTOBER 4, 2005, EXPIRES ON JULY 6, 2015.



THIS DESIGN DOES NOT CONSTITUTE A SITE EVALUATION. SUITABILITY OF SITE CONDITIONS FOR THIS OR ANY FOUNDATION IS NOT IMPLIED.



**BOTTOM**

1. SURFACES SHALL RECEIVE EMULSIFIED TAR ("TAR"), PRIOR TO OR CONTACT WITH SOIL. TREATMENT IF THEY SOIL OR SALT-LADEN AIR. PORTLAND CEMENT MAY BE ADDED TO IMPROVE ADHESION TO PANELS AND POLYMER ADDITION. HAVE A FACTORY-APPLIED COATING IN LIEU OF FIELD-COATING. COATED BEFORE BACKFILLING.
2. ONE ACCESS OPENING REQUIRED, NOT LESS THAN 18" IN ANY DIMENSION.
3. PANELS REQ'D AT SINGLE-WIDE END WALLS, UNLESS 3 LAGS PER FT INSTALLED AT SINGLE-WIDE END WALLS. SINGLE-WIDE UNITS CAN HAVE 2 LAGS PER FOOT WITH A 3' MAX OPENING.
4. SINGLE-WIDE PLAN FOR VENTING REQUIREMENTS AND OTHER NOTES.
5. ANCHORPANEL PADS AND PIERS PER MANUFACTURER'S INSTRUCTIONS.
6. ANCHORPANEL SHALL NOT BE INSTALLED IN HIGHLY CORROSIVE LOCATIONS, SUCH AS THOSE EXPOSED TO SALT SPRAY, UNLESS ADDITIONAL MEASURES ARE TAKEN FOR CORROSION PROTECTION.
7. IF INTERIOR SUPPORTS SETTLE, THEY SHALL BE ADJUSTED AS REQUIRED.

**ANCHORPANEL® FOUNDATION SYSTEM**

PERMANENT PERIMETER FOUNDATION SHEET 1 OF 1

FOR MANUFACTURED HOMES

**FAST TRACK® Foundation Systems**

© US PAT NOS. 6,076,320 6,205,725  
 (800) 789-9694 (707) 961-1891  
 ANCHORPANEL.COM  
 MICHAEL BUTLER, CIVIL ENGINEER  
 PO BOX 1520  
 FORT BRAGG, CA 95437

THIS SHEET MAY BE REPRODUCED, IN PART OR WHOLE, ONLY FOR THE PURPOSES RELATING TO AN ANCHORPANEL FOUNDATION SUPPLIED BY FAST TRACK FOUNDATION SYSTEMS. OTHER USES PROHIBITED. THANK YOU